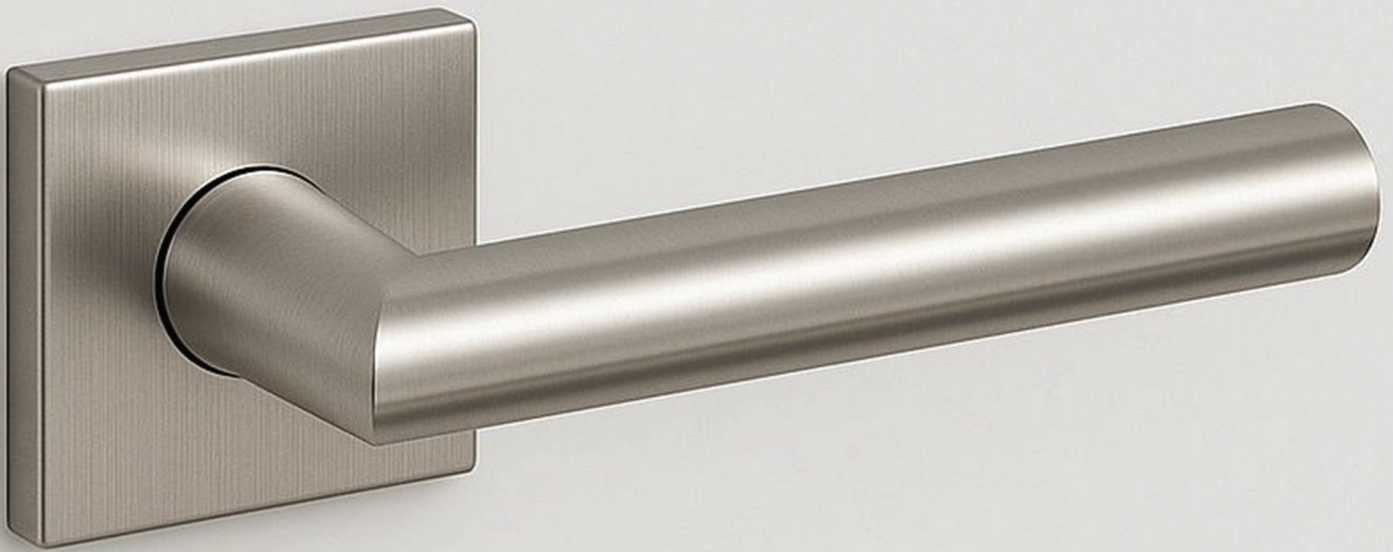




INDIA
INTERNATIONAL
HOUSE
LIMITED

STAINLESS STEEL HARDWARE



India Inteternational House Ltd.

ADDRESS: B-1 MMTC / STC Colony, LSC Navjivan Vihar,
New Delhi-110017 (INDIA)

PHONE NO.: +91 11 26691550, 43575156

MOBILE NO.: +91 9810517711. 9811036192

EMAIL: abg@skggroup.com, skg@skggroup.com

Website : www.builderhardware.com

STAINLESS STEEL PULL HANDLE



SSP-SD

Material : Stainless Steel (202/304/316)

Length : 522 & 300mm

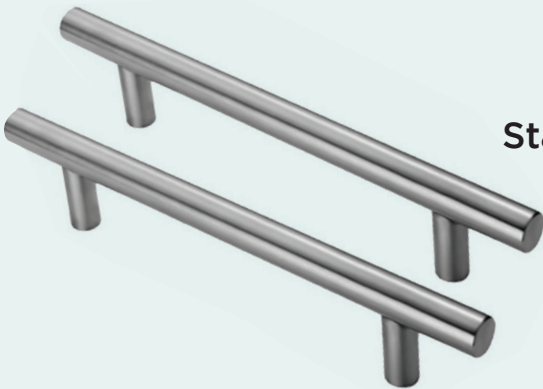
Diameter : 19mm

Finish :

(Optional)

Polished Stainless Steel

Or Satin Stainless Steel (Matt)



SSP-H

Material :

Stainless Steel (202/304/316)

(Optional)

Length: 1-1/4"

Finish :

Satin Stainless Steel



SSP-D

Material : Stainless Steel (202/304/316)

(Optional)

Dimensions:

3-1/4" x 5/16" x 1-3/16"

Finish:

Satin Stainless Steel

STAINLESS STEEL PULL HANDLE



SSP-OC

Material : Stainless Steel (202/304/316)
(Optional)

Length : 13"

Mounting Centers : 12"

Pull Offset : 8"

Finish :

Satin Stainless Steel



SSP-D

Material : Stainless Steel (202/304/316)
(Optional)

Length:

225,450 & 600mm

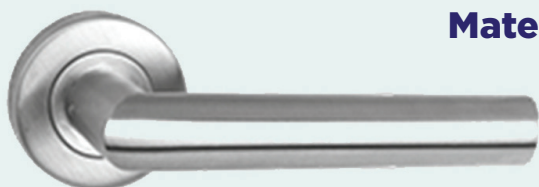
Finish: (Mirror Shine) or Satin
Stainless Steel (Matt)

Polished Stainless Steel



STAINLESS STEEL PULL HANDLE

SH - 02



Material : Stainless Steel (202/304/316)
(Optional)

Handle length: 130mm

Rose diameter: 52mm

Spindle length: 90mm

Finish:

Satin Stainless Steel

SH - 03



Material :
Stainless Steel (202/304/316)
(Optional)

Handle length: 132mm

Rose diameter: 53mm

Finish:

Satin Stainless Steel

SH - 06



Material : Stainless Steel (202/304/316)
(Optional)

Handle length: 140mm

Rose diameter: 52mm

Finish:

Satin Stainless Steel

STAINLESS STEEL PULL HANDLE



SSP-01

Material : Stainless Steel (202/304/316)
(Optional)

Handle: 16"

Finish:
Satin Stainless Steel



SS-01

Material : Stainless Steel (202/304/316)
(Optional)

Dimension: 75mm,

Finish:
Satin Stainless Steel



**INDIA
INTERNATIONAL
HOUSE
LIMITED**