



INDIA
INTERNATIONAL
HOUSE
LIMITED

India International House Limited

ADDRESS :- B-1 MMT/STC Colony, LSC
Navjivan Vihar, NEW DELHI – 110017 (INDIA)

PHONE NO. :- +91 11 43575156, 26691550

MOBILE NO. :- +91 9810517711, 9811036192

EMAIL :- abg@skggroup.com, skg@skggroup.com

WEBSITE :- www.builderhardware.com

S.NO.**TABLE OF CONTENT**

1.....	Baluster Series
2.....	Glass Spigot Series
3.....	Handrails
4.....	Glass Brackets
5.....	Glass Connector
6.....	Side Mounting
7.....	Pipe Wall Bracket
8.....	Frame Less Glass Holder
9.....	Fitting Accessories
10....	Railing Accessories

Baluster Series

AHPL/SB/1001



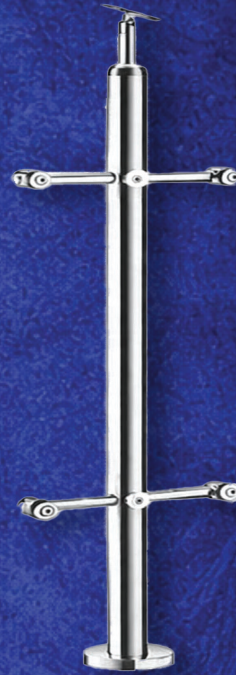
AHPL/SB/1002



AHPL/SB/1003



AHPL/SB/1004



AHPL/SB/1005



AHPL/SB/1006



AHPL/SB/2007



AHPL/SB/2008



AHPL/SB/2009



AHPL/SB/2010



Material - Stainless Steel
Material Grade - SS 202 / SS 304 / SS 316

Finish - PSS / SSS
Position - Stairs / Balcony / Deck

Baluster Series

AHPL/SB/2011



AHPL/SB/2012



AHPL/SB/3013



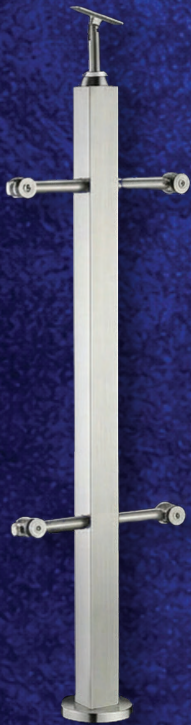
AHPL/SB/3014



AHPL/SB/3015



AHPL/SB/3016



AHPL/SB/3017



AHPL/SB/3018



AHPL/SB/4019



AHPL/SB/4020



Material - Stainless Steel
Material Grade - SS 202/SS 304/SS 316

Finish - PSS/SSS
Position - Stairs/Balcony/Deck

Baluster Series

AHPL/SB/4021



AHPL/SB/4022



AHPL/SB/4023



AHPL/SB/4024



AHPL/SB/4025



AHPL/SB/5026



AHPL/SB/5027



AHPL/SB/5028



AHPL/SB/5029



AHPL/SB/5030



Material - Stainless Steel
Material Grade - SS 202/SS 304/SS 316

Finish - PSS/SSS
Position - Stairs/Balcony/Deck

Baluster Series

AHPL/SB/5031



AHPL/SB/6032



AHPL/SB/6033



AHPL/SB/6034



AHPL/SB/6035



AHPL/SB/6036



AHPL/SB/6037



AHPL/SB/7038



AHPL/SB/7039



AHPL/SB/7040



Material - Stainless Steel
Material Grade - SS 202/SS 304/SS 316

Finish - PSS/SSS
Position - Stairs/Balcony/Deck

Baluster Series

AHPL/SB/7041



AHPL/SB/8042
(38 mm dia)



AHPL/SB/8043
(38 mm dia)



AHPL/SB/8044
(38 mm dia)



AHPL/SB/8045
(40x40 mm Sq)



AHPL/SB/8046
40 x 40 mm Sq.



AHPL/SB/8047
40 x 40 mm Sq.



AHPL/SB/8048
40 x 40 mm Sq.



AHPL/SB/8049
40 x 40 mm Sq.



AHPL/SB/8050
40 x 40 mm Sq.



Material – Stainless Steel
Material Grade – SS 202/SS 304/SS 316

Finish – PSS/SSS
Position – Stairs/Balcony/Deck

Baluster Series

AHPL/SB/8051
(40 x 40 mm Sq)



AHPL/SB/8052
(40 x 40 mm Sq)



AHPL/SB/8053
50 x 25 Rectangle



AHPL/SB/8054
50 x 25 Rectangle



AHPL/SB/8055
50 x 25 Rectangle



AHPL/SB/8056
50 x 25 Rectangle



AHPL/SB/8057
40 x 6 Flat Sheet
Both sides



AHPL/SB/8058
40 x 6 Flat Sheet
Both sides



AHPL/SB/8059
40 x 12 Flat Sheet



AHPL/SB/8060
40 x 12 Flat Sheet



Material – Stainless Steel
Material Grade – SS 202/SS 304/SS 316

Finish – PSS/SSS
Position – Stairs/Balcony/Deck

Baluster Series

AHPL/SB/9061
50x12 Flat Sheet



AHPL/SB/9062
50x12 Flat Sheet



AHPL/SB/9063
70x6
Laser Cut Sheet
Both Side



AHPL/SB/9064
70x6
Laser Cut Sheet
Both Side



AHPL/SB/9065
70x 6
Laser Cut Sheet
Both Side



AHPL/SB/9066
70x6
Laser Cut Sheet
Both Side



AHPL/SB/9067
70x6
Laser Cut Sheet
Both Side



AHPL/SB/9068
70x6
Laser Cut Sheet
Both Side



AHPL/SB/9069
70x6
Laser Cut Sheet
Both Side



AHPL/SB/9070
70x 6
Laser Cut Sheet
Both Side



Material – Stainless Steel
Material Grade – SS 202/ SS 304/ SS 316

Finish – PSS/ SSS
Position – Stairs/ Balcony/ Deck

Baluster Series

AHPL/SB/9071
50 x 6 Flat Sheet
Both Side



AHPL/SB/9072
50 x 6 Flat Sheet
Both Side



AHPL/SB/9073
50 x 6 Flat Sheet
Both Side



AHPL/SB/9074
50 x 6 Flat Sheet
Both Side



AHPL/SB/9075
50 x 6 Flat Sheet
Both Side



AHPL/SB/9076
50 x 6 Flat Sheet
Both Side



AHPL/SB/9077
50 x 6 Flat Sheet
Both Side



AHPL/SB/9078
50 x 6 Flat Sheet
Both Side



AHPL/SB/9079
50 x 6 Flat Sheet
Both Side



AHPL/SB/9080
50 x 6 Flat Sheet
Both Side



Material – Stainless Steel
Material Grade – SS 202/SS 304/SS 316

Finish – PSS/SSS
Position – Stairs/Balcony/Deck

Baluster Series

AHPL/SB/9081
40 x 6
Laser - cut Sheet



AHPL/SB/9082
40 x 6
Laser - cut Sheet



AHPL/SB/9083
70 x 6
Laser - cut Sheet



AHPL/SB/9084
70 x 6
Laser - cut Sheet



Material - Stainless Steel
Material Grade - SS 202/SS 304/SS 316

Finish - PSS/SSS
Position - Stairs/Balcony/Deck

GLASS SPIGOT SERIES



AHPL/GS/10085



AHPL/GS/10086



AHPL/GS/10087



AHPL/GS/100



AHPL/GS/10089



AHPL/GS/10090



AHPL/GS/10091



AHPL/GS/10092



AHPL/GS/10093

Material - Stainless Steel
Position - Stairs/ Balcony/ Deck

Finish - PSS/ SSS
Material Grade - SS 202/ SS 304/ SS 316

GLASS SPIGOT

SERIES

Material - Stainless Steel

Position - Stairs/ Balcony/ Deck



AHPL/GS/10094

Available Dimensions

40 x 12 mm	H- 6"
50 x 12 mm	H- 9"



AHPL/GS/10095

Available Dimensions

60 x 12 mm	H- 6"
	H- 9"



AHPL/GS/10096

Available Dimensions

40 x 12 mm	H- 6"
50 x 12 mm	H- 9"
60 x 12 mm	



AHPL/GS/10097

Available Dimensions

40 x 12 mm	H- 9"
50 x 12 mm	H- 12"



AHPL/GS/10098

Available Dimensions

40 x 12 mm	H- 10"
------------	--------



AHPL/GS/10099

Available Dimensions

40 x 12 mm	H- 9"
50 x 12 mm	H- 12"



AHPL/GS/100100

Available Dimensions

25 x 25 mm Sq.	H- 9"
40 x 40 mm Sq.	H- 12"



AHPL/GS/100101

Available Dimensions

25 x 25 mm Sq.	H- 9"
	H- 12"

Finish - PSS/ SSS

Material Grade - SS 202/ SS 304/ SS 316

Haindrail



AHPL/SHR/100104
"T" TYPE HANDLE



AHPL/SHR/100105
"C" TYPE HANDLE



AHPL/SHR/100106
"HOCKEY" TYPE HANDLE



AHPL/SHR/100107
"SQUARE" TYPE HANDLE

Glass Brackets



AHPL/GB/100108
"T" TYPE



AHPL/GB/100109
"SQUARE" TYPE



AHPL/GB/100110
PROFILE

Material - Stainless Steel
Position - Stairs/ Balcony/ Deck

Finish - PSS/ SSS
Material Grade - SS 202/ SS 304/ SS 316

Glass Brackets



AHPL/GB/100111

"HOCKEY" TYPE



AHPL/GB/100112

"C" TYPE



AHPL/GB/100113

Material - Stainless Steel
Application - Glass Fitting

Finish - PSS/ SSS
Material Grade - SS 202/ SS 304/ SS 316

50 X 05 mm Sq.



AHPL/GC/100114

30 mm Dia.



AHPL/GC/100115

30 mm Dia.



AHPL/GC/100116

Glass Connector

50 X 05 mm Sq.

25 X 25 mm Sq. Bar



AHPL/GC/100117

50 mm Dia.



AHPL/GC/100119

Dia Cast



AHPL/GC/100118

Side Mounting System



AHPL/SMS/100120



AHPL/SMS/100121



AHPL/SMS/100122

Pipe Wall Bracket

"T" TYPE



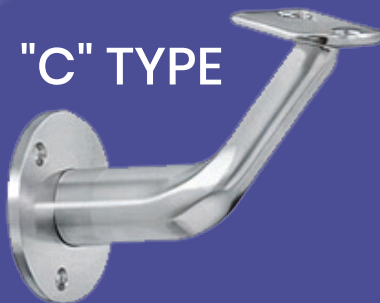
AHPL/PWB/100123

"L" TYPE



AHPL/PWB/100125

"C" TYPE



AHPL/PWB/100124



AHPL/PWB/100126



AHPL/PWB/100127

Material - Stainless Steel
Position - Stairs/ Balcony/ Deck

Finish - PSS/ SSS
Material Grade - SS 202/ SS 304/ SS 316

Frame Less Glass Holder

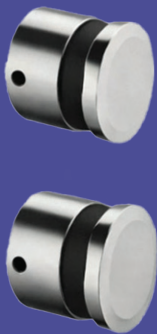


AHPL/FLGH/100128



AHPL/FLGH/100129

Fitting Accessories

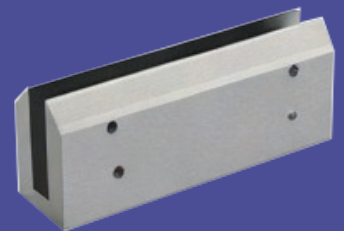


AHPL/FA/100130

2" Joint Sleeve



AHPL/FA/100134



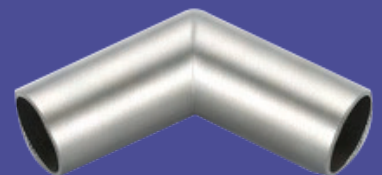
AHPL/FA/100131

2" Die cast Flexible Elbow



AHPL/FA/100132

2" Degree Elbow



AHPL/FA/100133

Material - Stainless Steel
Position - Stairs/ Balcony/ Deck

Finish - PSS/ SSS
Material Grade - SS 202/ SS 304/ SS 316

Railing Accessories

Bottom Bracket for
10mm & 12mm Glass
With Gasket & Anchor



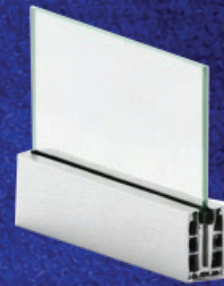
AHPL/RA/100135

Bottom Bracket for
12mm & 13.5mm
Glass with Gasket
& Anchor Fastner



AHPL/RA/100136

Bottom Bracket for
10mm & 12mm Glass
With Gasket & Anchor



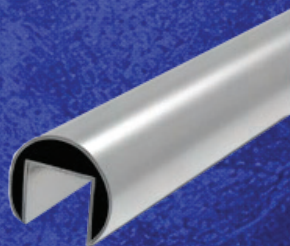
AHPL/RA/100137

Cover Plate for Bottom
Bracket (Both Side in Pair)
For AHPL/RA/100136



AHPL/RA/100138

Top Hand Rail (Round)



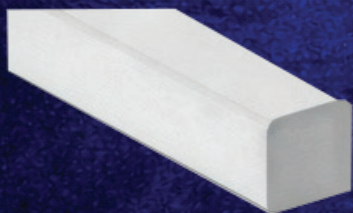
AHPL/RA/100139

Top Hand Rail (Square)



AHPL/RA/100140

Top Hand Rail



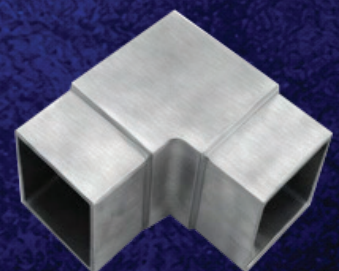
AHPL/RA/100141

90 Degree Elbow for
Round Pipe



AHPL/RA/100142

90 Degree Elbow for
Square Pipe



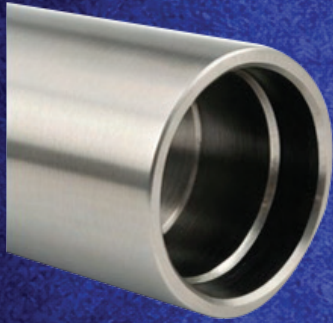
AHPL/RA/100143

Material - Stainless Steel
Position - Stairs/ Balcony/ Deck

Finish - PSS/ SSS
Material Grade - SS 202/ SS 304/ SS 316

Railing Accessories

Pipe Joints for Top Round Pipe



AHPL/RA/100144

Pipe Joints for Top Square Pipe



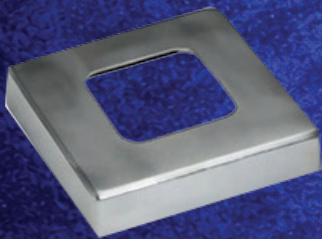
AHPL/RA/100145

Wall Concealed Cap for Round Pipe



AHPL/RA/100146

Wall Concealed Cap for Round Pipe



AHPL/RA/100147

End Cap for AHPL/RA/100135



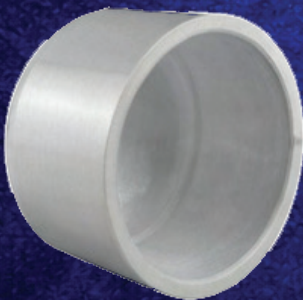
AHPL/RA/100148

End Cap for AHPL/RA/100136



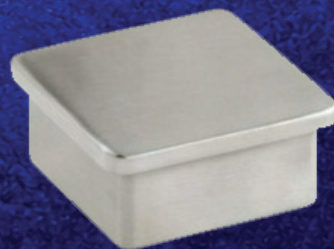
AHPL/RA/100149

End Cap for Top Round Pipe



AHPL/RA/100150

End Cap for Top Square Pipe



AHPL/RA/100151

Material - Stainless Steel
Position - Stairs/ Balcony/ Deck

Finish - PSS/ SSS
Material Grade - SS 202/ SS 304/ SS 316



INDIA
INTERNATIONAL
HOUSE
LIMITED